



# DHL GLOBAL FORWARDING

## Logistikcluster – Handelskammer beider Basel

Pratteln, 20.11.2019



# Agenda

---

- DHL Global Forwarding at EuroAirport
- Digitalization and related trends in logistics
- EuroAirport and cargo: Relevant topics

# DHL Global Forwarding at EuroAirport

---

- Long-lasting partnership
- DGF has own warehouse and warehouse employees
- CEIV Pharma certified – Excellence in Pharmaceutical Logistics
- GDP-compliant building, temp.-controlled +15° to +25° C



# Digitalization in logistics

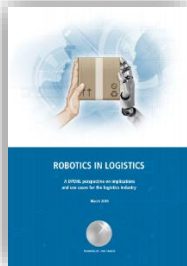
---

- Paperless forwarding (E-Freight): Time-saving and environmentally friendly
- Cargowise: New worldwide IT system at DGF
- Kiosk -> Self-checkin cargo:
  - Real-time cargo flow reducing waiting time
  - e-AWB data check and transparency
  - Potential for shortening cut-off times

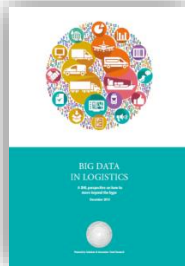




# Digitalization at DGF: Topics & trends



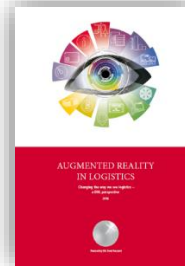
**Robotics in Logistics**  
[dhl.com/robots](https://dhl.com/robots)



**Big Data in Logistics**  
[dhl.com/bigdata](https://dhl.com/bigdata)



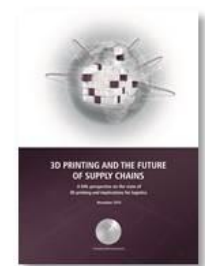
**Low-Cost Sensor Technology**  
[dhl.com/lcst](https://dhl.com/lcst)



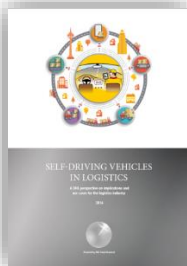
**Augmented Reality in Logistics**  
[dhl.com/augmentedreality](https://dhl.com/augmentedreality)



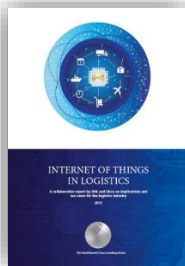
**Unmanned Aerial Vehicles**  
[dhl.com/uav](https://dhl.com/uav)



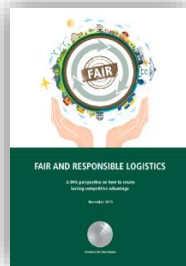
**3D Printing in Logistics**  
[dhl.com/3dprinting](https://dhl.com/3dprinting)



**Self-Driving Vehicles in Logistics**  
[dhl.com/selfdriving](https://dhl.com/selfdriving)



**Internet of Things in Logistics**  
[dhl.com/iot](https://dhl.com/iot)



**Fair and Responsible Logistics**  
[dhl.com/fairresponsible](https://dhl.com/fairresponsible)



**Omni-Channel Logistics**  
[dhl.com/omnichannel](https://dhl.com/omnichannel)



**APAC Trade Trends**  
[dhl.com/apactrends](https://dhl.com/apactrends)



**Sharing Economy Logistics**  
[dhl.com/sharingeconomy](https://dhl.com/sharingeconomy)

## EAP and cargo: Relevant topics

- China and USA: Desirable destinations for DGF and our competitors
- RFS night and weekend ban:
  - Airlines use solutions via France to main hubs
  - Trinational airport as an advantage
- Warehouse +2-8°C is a topic for EAP, handling agents and forwarders
  - > Status today: Project is running at EAP



THANK YOU

