



CORONA-Krise ERFAHRUNGEN & AUSWIRKUNGEN SWISSPORT BASEL AM EUROAIRPORT

Swissport Basel / Andreas Behnke
November 2, 2020

[swissport.com](https://www.swissport.com)

SWISSPORT INTERNATIONAL KEY FIGURES 2019



> 850
CUSTOMERS

298
AIRPORT PRESENCE¹

4.1
FLIGHTS HANDLED (million)

6
CONTINENTS

115
CARGO WAREHOUSES








4.6
CARGO TONS
HANDLED (million)

> 45,600
EMPLOYEES

265
PASSENGERS
SERVED (million)

SWISSPORT IN CENTRAL AND EASTERN EUROPE

THE KEY FACTS SWISSPORT BASEL / FIGURES 2019

	CARGO WAREHOUSES	7,500m2 & CEIV
	CUSTOMERS	35 Cargo / 37 Pax
	EMPLOYEES¹	557
	LOUNGES	1
	AIRCRAFT TURNAROUNDS²	35'287
	PASSENGERS² (million)	4.3
	CARGO TONS²	38'621



AIRPORT GROUND SERVICES



PASSENGER SERVICES

- Check-in and Gate
- Lounge Hospitality
- Executive Aviation
- Ticketing Services
- Lost & Found



AIRPORT GROUND SERVICES



RAMP HANDLING

- Baggage Services
- De-icing
- Push-back & Moving of Aircraft
- Load Control



AIR CARGO HANDLING

SERVICES

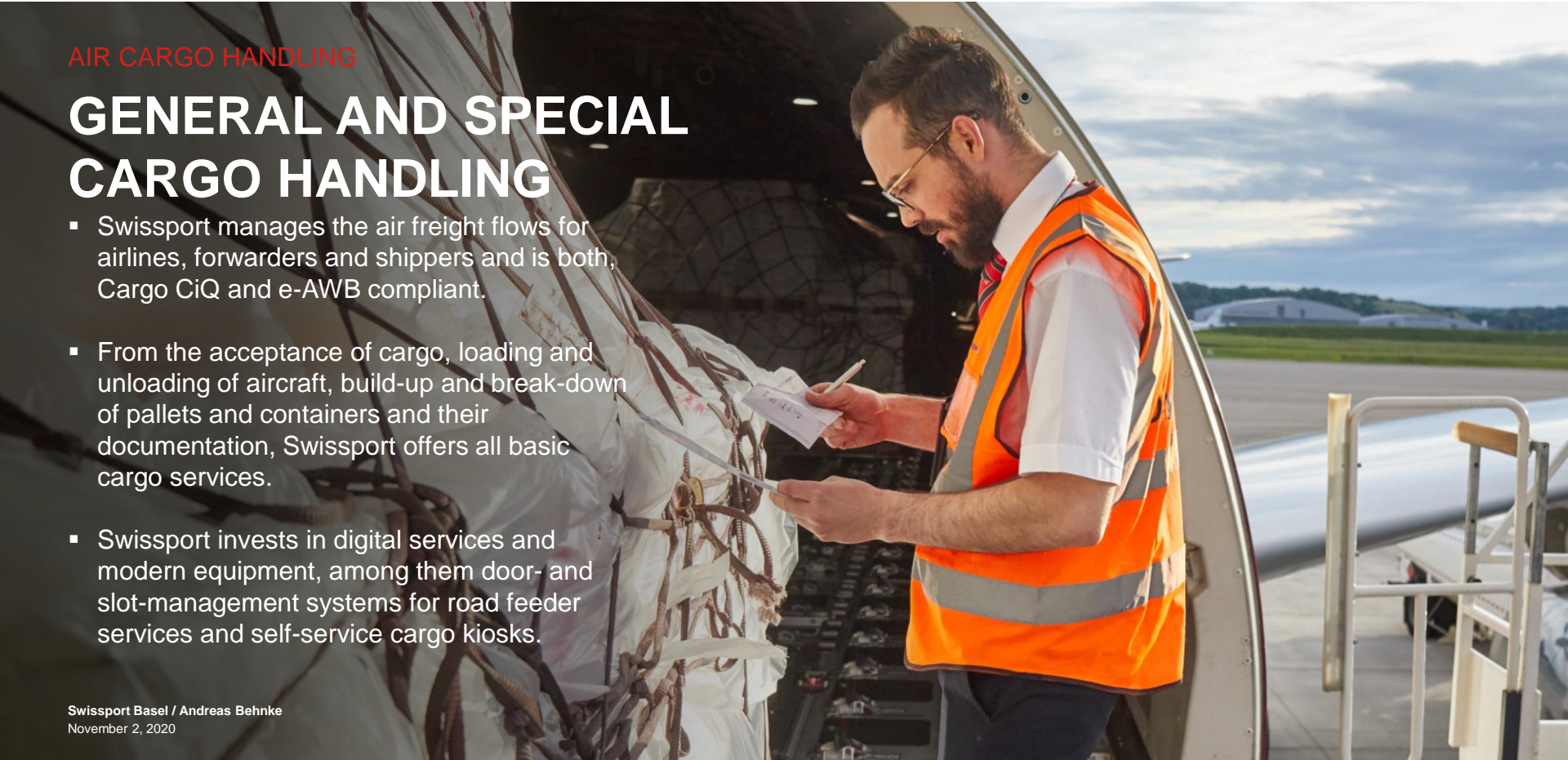
- General and Special Cargo Handling
- Temperature-controlled Handling (e.g. pharma)
- CEIV Pharma certified by IATA
- Express Services
- Ramp Handling Freighter Flights and Integrator



AIR CARGO HANDLING

GENERAL AND SPECIAL CARGO HANDLING

- Swissport manages the air freight flows for airlines, forwarders and shippers and is both, Cargo CiQ and e-AWB compliant.
- From the acceptance of cargo, loading and unloading of aircraft, build-up and break-down of pallets and containers and their documentation, Swissport offers all basic cargo services.
- Swissport invests in digital services and modern equipment, among them door- and slot-management systems for road feeder services and self-service cargo kiosks.





**THANK YOU
LET'S DISCUSS**